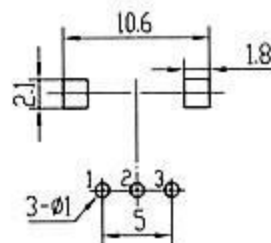
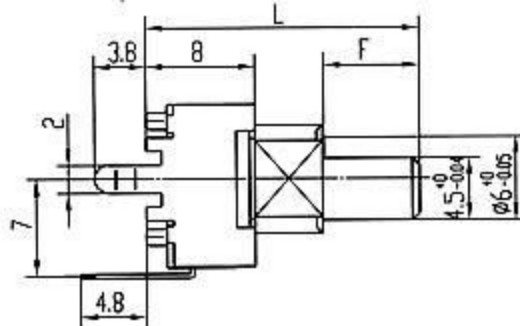
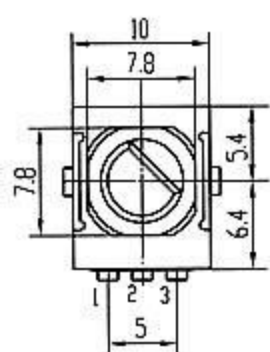


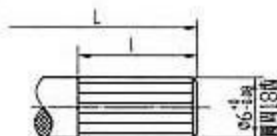
阻值范围 Resistance range	5~250K Ω
阻值允许误差 Tolerance of resistance	$\pm 20\%$ 0.05W
额定功率 power Rating	50V AC/ DC 20V
额定电压 Rated voltage	10 Ω max
终端电阻 Terminal resistance	$\leq 100\text{mV}$
转动噪声 Rotational noise	DC250V 100M Ω min
绝缘电阻 Insulation resistance	

耐电压 Withstanding Voltage	AC300V 1minute
总机械旋转角度 Total rotation angle	270 $\pm 5^\circ$
动作力 Operating force	10~80gf.cm
止挡强度 Shaft Stopper Strength	3Kgf.cm min
机械耐久性 Mechanical endurance	10000周/min turns



Standard Shaft Size:

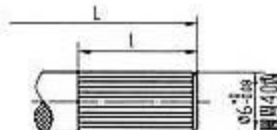
●18T



L	-	20	25	30	35
---	---	----	----	----	----

l	-	7	7	7	7
---	---	---	---	---	---

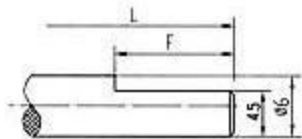
●40T



L	15	20	25	30	35
---	----	----	----	----	----

l	6	7	7	7	7
---	---	---	---	---	---

●F



L	15	20	25	30	-
---	----	----	----	----	---

F	6	7	12	12	12
---	---	---	----	----	----