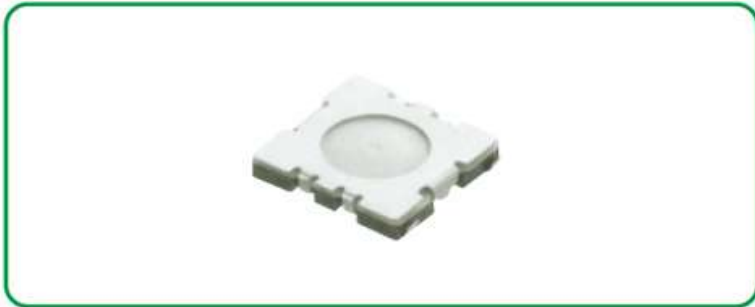


# H SERIES

## 3.9x4.1 Double Action Type Tact Switch



### Features

- Sharp click feel with a positive tactile feedback
- Ultraminiature and light weight structure suitable for high density mounting, Economical but reliable
- Insert molding in the contact with special treatment prevents flux build-up during soldering and permits auto-dipping

### Applications

- Cameras, digital still cameras
- Digital video camcorders
- Compact portable devices
- For operating the other multifunctional electronic devices

### Specification

Items		Standard
Operating temperature range		-30℃ to +85℃
Electrical performance	Rating	50mA, 12V DC
	Insulation resistance	100MW min, 100V DC
	Dielectric strength	250V AC for 1 min.
	Contact resistance	100mW max.
Durability	Lifetime	500,000 Cycles
Mechanical performance	Operating force	1 st 90 ± 40gf 2 st 190 ± 60gf
	Travel	1 st 0.15 ± 0.1mm 2 st 0.25 ± 0.1mm

### Diagram

No.	Dimensions	Circuit Diagram
		Pad Layout
1	<ul style="list-style-type: none"> <li>● TMHU35</li> </ul>	

MULTI-FUNCTION SWITCH