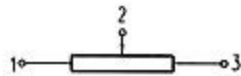
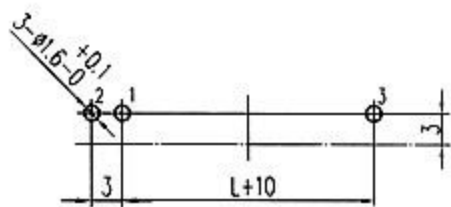
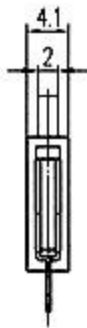
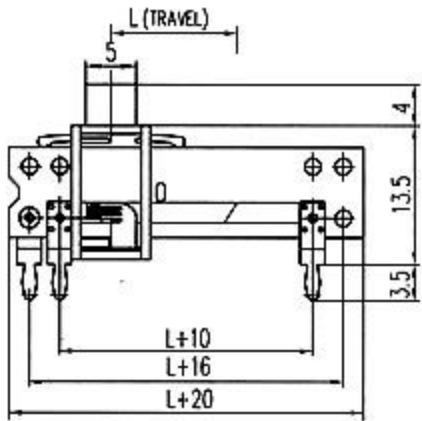


阻值范围 Resistance range	500Ω TO 1MΩ						
阻值允许误差 Tolerance of resistance	± 20%						
电值规律 Resistance(law) taper	ABCDW						
额定功率 Power Rating	规律Taper \ 行程Travel		10mm	15mm	20mm	30mm	45-60mm
	直线 B	双联Single	0.05	0.05	0.1	0.2	0.25
		单联Dual	0.025	0.025	0.05	0.1	0.125
	其它 Except B	双联Single	0.025	0.025	0.5	0.1	0.125
		单联Dual	0.012	0.012	0.025	0.05	0.05
额定电压 Rated voltage	直线 B		100	100	200	200	200
	其它Except B		50	50	150	150	150
绝缘电阻 Insulation resistance	10MΩ Min AT 250V DC						
耐电压 Withstanding Voltage	1Min,AT 250V AC						
动作力 Operating force	10~120gf.cm						
定位点起动力 Click slip-out force(only center click)	+20~150gf.cm						
滑动寿命 Sliding life	10,000 Cycles						



$L: 10; 15; 20; 30.$