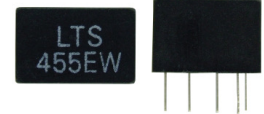
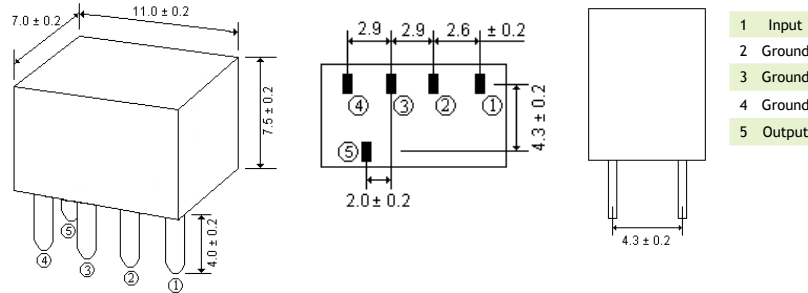




DESCRIPTION

Ceramic Filters LTS 455/450W Series are miniaturized versions of the CFU/CFWS lines. These compact, highly selective characteristics are recommended for use in applications ranging from two-way radio to auxiliary filters in high class transceivers. These ultra-miniature versions consume approximately 40% less volume while still offering the same high performance characteristics.

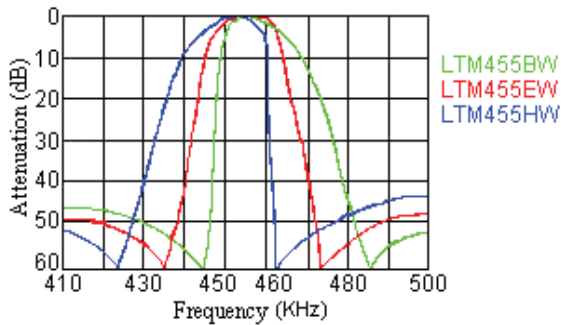
MECHANICAL DIMENSIONS (All in mm) LTS...W



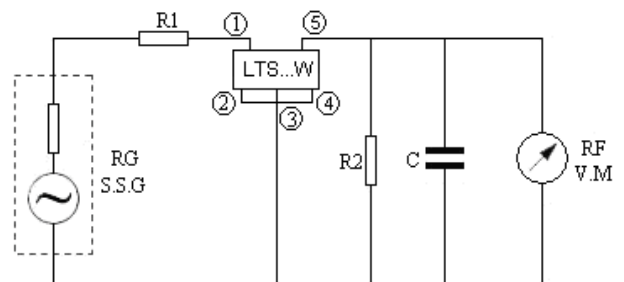
ELECTRICAL SPECIFICATION - Table 1

Part Number	Center Frequency in kHz	Insertion Loss (dB)	Pass Band Ripple (dB) max	6dB Bandwidth (kHz) min	50dB Bandwidth (kHz) min	Stop Band Att. 10kHz (dB) min	Input/Output Impedance (Ω)
LTS450BW	450 ± 2.0	4	2	±15	±30	45	1500
LTS455BW	455 ± 2.0	4	2	±15	±30	45	1500
LTS450CW	450 ± 2.0	4	2	±12.5	±24	45	1500
LTS455CV	455 ± 2.0	4	2	±12.5	±24	45	1500
LTS450DW	450 ± 1.5	4	2	±10	±20	45	1500
LTS455DW	455 ± 1.5	4	2	±10	±20	45	1500
LTS450EW	450 ± 1.5	6	2	±7.5	±15	45	1500
LTS455EW	455 ± 1.5	6	2	±7.5	±15	45	1500
LTS450FW	450 ± 1.5	6	2	±6	±12.5	45	2000
LTS455FW	455 ± 1.5	6	2	±6	±12.5	45	2000
LTS450GW	450 ± 1.5	6	2	±4.5	±10	45	2000
LTS455GW	455 ± 1.5	6	2	±4.5	±10	45	2000
LTS450HW	450 ± 1.0	6	2	±3	±9	45	2000
LTS455HW	455 ± 1.0	6	2	±3	±9	45	2000
LTS450IW	450 ± 1.0	6	2	±2	±7.5	45	2000
LTS455IW	455 ± 1.0	6	2	±2	±7.5	45	2000
LTS450HTW	450 ± 1.0	6	2	±3	±9	60	2000
LTS455HTW	455 ± 1.0	6	2	±3	±9	60	2000

SERIES CHARACTERISTICS LTS...W

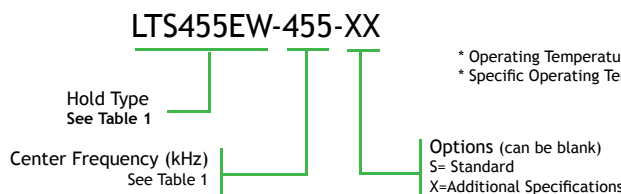


TEST CIRCUIT LTS...W



Rg + R1= R2= Input/Output Impedance

PART NUMBERING SYSTEM (Example)



* Operating Temperature Range: 0°C to 60°C (Standard)
* Specific Operating Temperature Range under request.