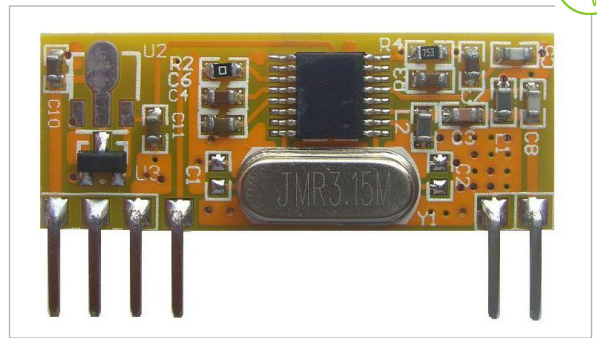




DESCRIPTION

The CY08 is a ASK/OOK compatible super heterodyne wireless receiving module with high performance for ISM frequency band. With the adoption of European brand RF wireless data transferring/receiver chipsets. The model has a high receiving sensitivity and strong ability of resisting. From wireless signal input to data output can be done without any electrical circuit. User only use extra simple data decode circuit can achieve wireless products development. The CY08 is for industrial level version



FEATURES

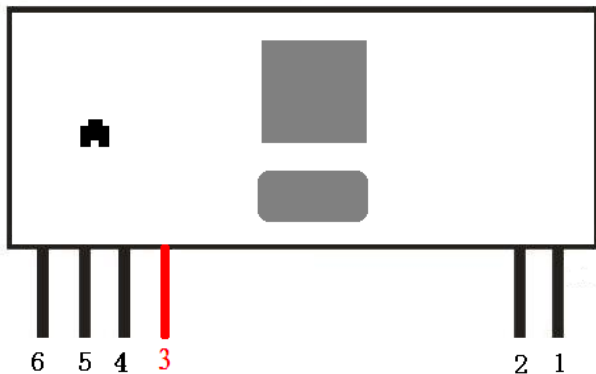
- Frequency: 315MHz/433.92MHz/868.35/915MHz(custom frequency is available);
- High sensitivity -110dBm@433.92 1kbps BER10E-2;
- Supply voltage: VCC= 3.6 to 5.5 V;
- IF band: 230KHz;
- Low power consumption: 4.8mA@315M, 6mA@433.92M;
- Wide operating temperature;
- Excellent selectivity and noise rejection;
- Easy for all applications;

APPLICATION

- Remote gate controls
- Remote keyless entry
- Car alarm systems
- wireless security systems
- Automation systems

PIN DEFINITION

Figure 1 CY08 Shape & Pins



1. ANT 2. GND 3. EN 4. GND 5. DATA 6. +5V

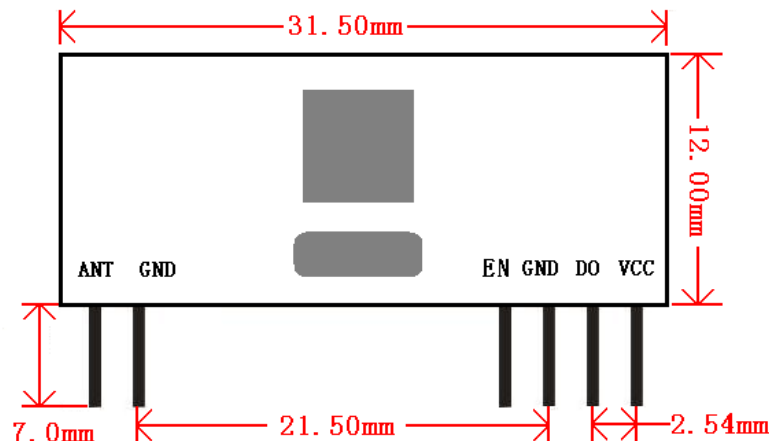
Please Note: CY08 is come with standard 5 PINs (without the red colored pin). Please notify us if you would like 6PINs.

Pin Name	Empty (
ANT	Antenna In
GND	Connect to negative power supply
EN	Optional output: 1. Empty (default setting); 2. Battery saving mode (shut down): (working mode in low level input) (Sleeping mode in high level input)
GND	Connect to negative power supply
DATA	Data output
VDD	Positive Supply Power

Note 1: ANT pin is a 50 Ohm antenna input. The length is about:
23cm for 315MHz
17cm for 433.92MHz
8.6cm for 868.35MHz
8.2cm for 915MHz

MECHANICAL DIMENSION

Figure 2 CY08 Dimension



Condition: Ta=25°C VCC=5.0V Frequency=315MHz

ELECTRICAL CHARACTERISTICS					
Parameters	Condition	Reference Value			Unit
		Min	Typ	Max.	
Frequency Range	other freq. available	314.90	315	315.10	MHz
Receiver Sensitivity	BER=10E-2		-110		dBm
Data Rate	Manchester Code	0.58		12	Kbps
Supply Voltage VDD	DC	3.6	5	5.5	V
Current		4.8		6	mA
Operating Temperature		-40		+85	°C

Condition: Ta=25°C VCC=5.0V Frequency=433.92MHz

ELECTRICAL CHARACTERISTICS					
Parameters	Condition	Reference Value			Unit
		Min	Typ	Max.	
Frequency Range	other freq. available	433.82	433.92	434.02	MHz
Receiver Sensitivity	BER=10E-2		-110		dBm
Data Rate	Manchester Code	0.58		9.6	KBaud
Supply Voltage VDD	DC	3.6	5	5.5	V
Current		4.8		6.0	mA
Operating Temperature		-40		+85	°C

Condition: Ta=25°C VCC=5.0V Frequency=868.35MHz / 915MHz

ELECTRICAL CHARACTERISTICS					
Parameters	Condition	Reference Value			Unit
		Min	Typ	Max.	
Frequency Range			868.35/915		MHz
Receiver Sensitivity	BER=10E-2	-108	-110	-110	dBm
Data Rate		0.58	1.2	9.6	KBaud
Supply Voltage VDD	DC	3.6		5.5	V
Current			6		mA
Operating Temperature		-40		+85	°C

ORDER INFORMATION:

CY 08 - 433.92 X

