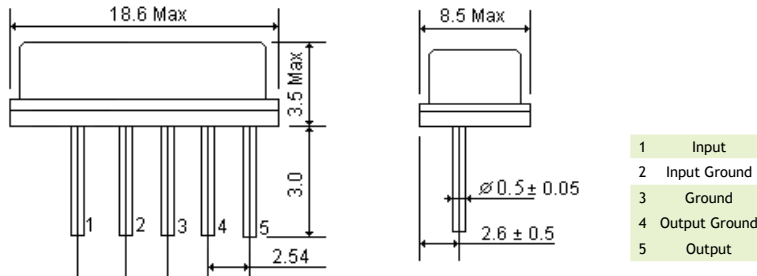




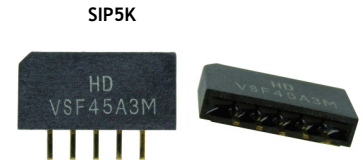
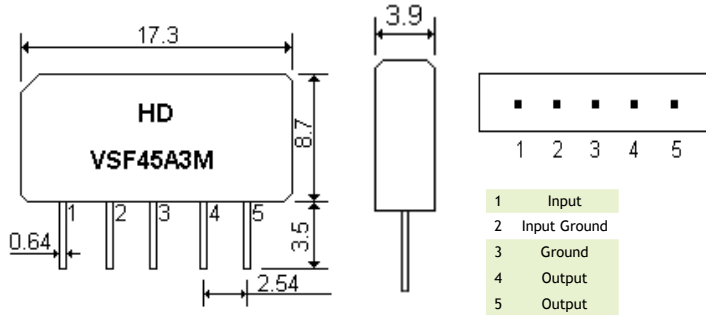
DESCRIPTION

The SAW filter series have broad line up products meeting all broadcast standard including NTSC, PAL and SECAM systems. These filters are composed of two interdigital transducers on a single-crystal piezoelectrical chip. They are used in electronic equipments such as TV and so on.

MECHANICAL DIMENSIONS (all in mm) F14



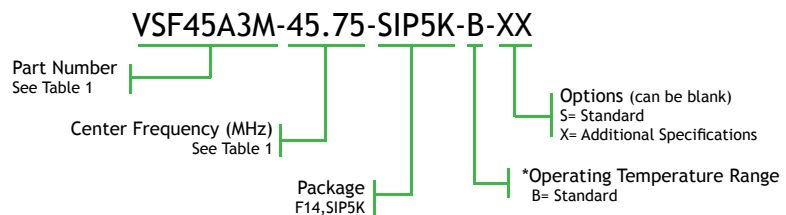
MECHANICAL DIMENSIONS (all in mm) SIP5K



ELECTRICAL SPECIFICATION - Table 1

Picture Carrier (MHz)	Part Number	Vestigial Sideband (MHz)	Bandwidth 3dB (MHz)	Standard	Package
38.0	VSF38A1M	0.75	8.0	D/K	F14
38.90	VSF389A1M	0.75	7.0	B/G	F14
	VSF389A2M	0.75	7.0	B/G	SIP5K
45.75	VSF45A1M	0.75	6.0	M/N	SIP5K
	VSF45A2M	0.75	7.5	D/K	SIP5K
	VSF45A3M	0.75	6.0	M/N	SIP5K
	VSF45A4M	0.75	6.0	M/N	SIP5K

PART NUMBERING SYSTEM (Example)



*Operating Temperature Range: -10 to 60°C (Standard)
Specific Operating Temperature Range under request.