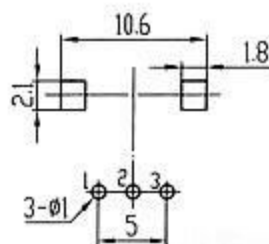
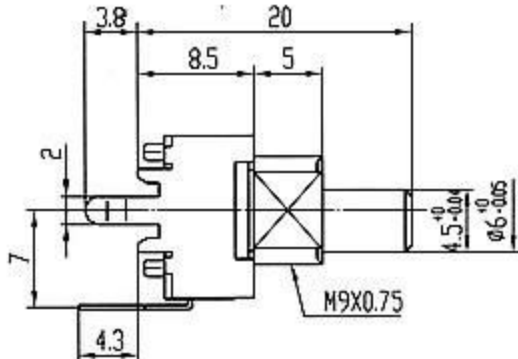
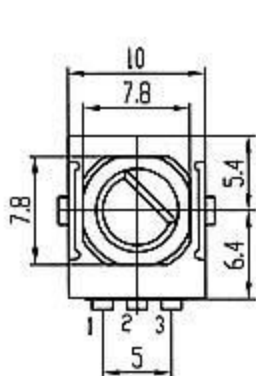


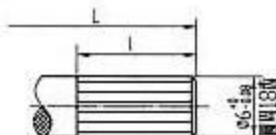
阻值范围 Resistance range	5~250K Ω
阻值允许误差 Tolerance of resistance	$\pm 20\%$ 0.05W
额定功率 power Rating	50V AC/ DC 20V
额定电压 Rated voltage	10 Ω max
终端电阻 Terminal resistance	$\leq 100\text{mV}$
转动噪声 Rotational noise	DC250V 100M Ω min
绝缘电阻 Insulation resistance	

耐电压 Withstanding Voltage	AC300V 1minute
总机械旋转角度 Total rotation angle	270 $\pm 5^\circ$
动作力 Operating force	10~80gf.cm
止挡强度 Shaft Stopper Strength	3Kgf.cm min
机械耐久性 Mechanical endurance	10000周/min turns



Standard Shaft Size:

● 18T



L

-

20

25

30

35

1

-

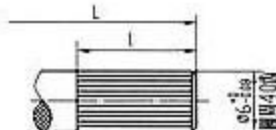
7

7

7

7

● 40T



L

15

20

25

30

35

1

6

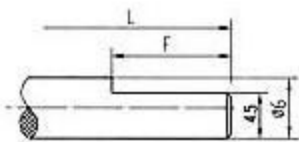
7

7

7

7

● F



L

15

20

25

30

-

F

6

7

12

12

12