

# Series LV1

## Voltage Controlled Crystal Oscillator Full/half size metal Can Package

### FEATURE

- Small size as small as 20.26×12.65mm and 12.6×12.65mm
- Hybrid IC Circuit Construction
- CMOS compatible output
- All metal,hermetically sealed welded package



### ELECTRICAL SPECIFICATIONS

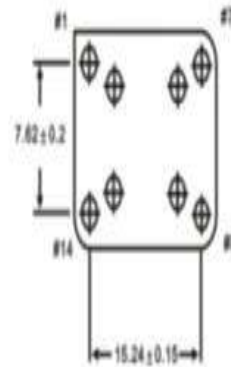
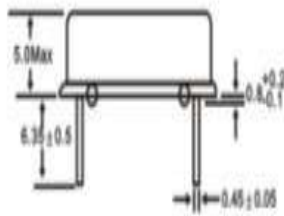
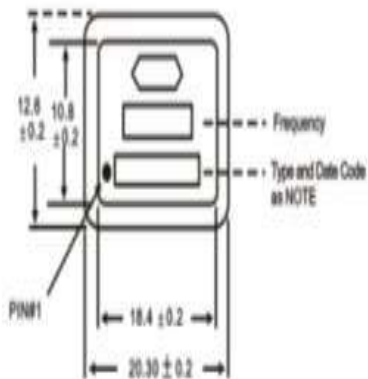
Item		Specifications	
Frequency Range		1MHz-80MHz	
Frequency Stability		$\pm 25, \pm 50, \pm 100$ ppm	
Operating Temperature		0-70°C, -20-70°C, -40-85°C	
Fan Out Type		HCMOS Square wave	
Load		15pF	15pF
	Voltage Voh	4.5V Minimum	3.0V Minimum
	Voltage Vol	0.4V Maximum	0.3V Maximum
	Current Ioh	-0.8mA	4.0mA
	Current Iol	8.0mA	4.0mA
	Duty Cycle	40/60 Maximum	40/60 Maximum
	Rise/Fall Time	5ns	5ns
Frequency Control		Positive Transfer Characteristic	
	Pullability	$\pm 50$ ppm, $\pm 100$ ppm, $\pm 150$ ppm, $\pm 200$ ppm Minimum	
	Control Voltage	0.5Vdc to 4.5V dc	0.3Vdc to 3.0Vdc
	Center Frequency	2.5V dc	1.65Vdc
	Monotonic Linearity	$< \pm 15\%$	$< \pm 15\%$
	Input impedance	50Klhms Normal	50Klhms Normal
Supply Voltage		+5Vdc+/-5% or 3.3V +/-5%	+3.3V
Supply Current		60mA Max	40mA Max
Package		All metal,hermetically sealed welded package	
		Please consult our sales representative for other specifications	

# Series LV1

## Voltage Controlled Crystal Oscillator Full/half size metal Can Package

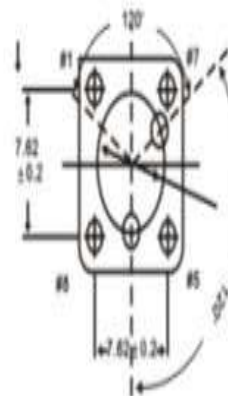
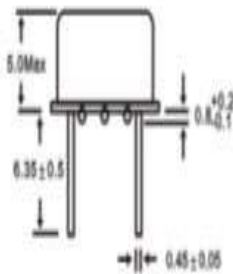
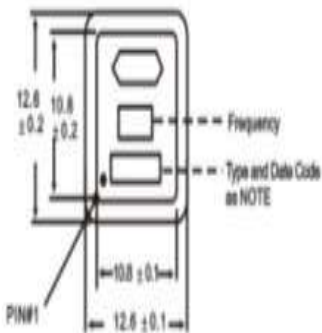
### DIMENSION(mm)

#### Full Size VCXO



HALF SIZE	
PIN	Connection
#1	Control Voltage
#7	GND
#8	Out put
#4	(+)5VDC

#### Half Size VCXO



HALF SIZE	
PIN	Connection
#1	Control Voltage
#4	GND
#5	Out put
#8	(+)5VDC