

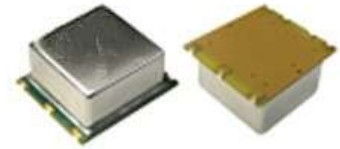
**Series OSD**  
**25.4 x 22.1 mm Oven Controlled Crystal Oscillator**

**FEATURE**

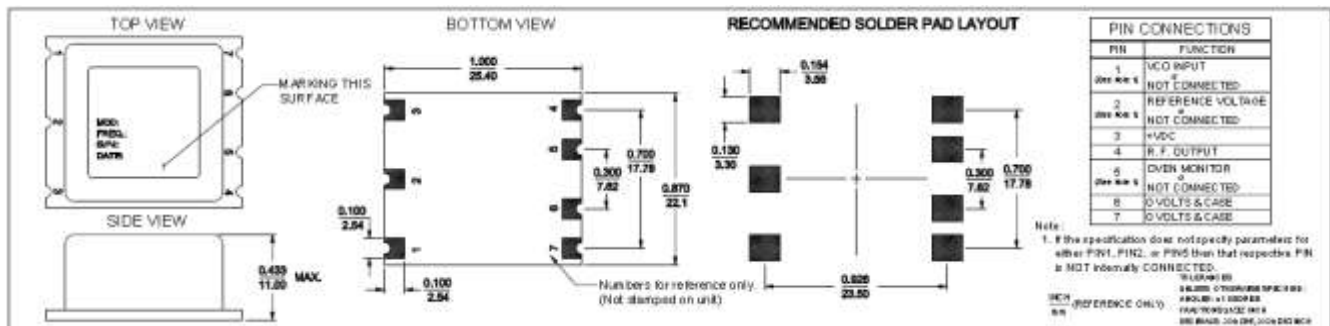
- Dimension 25.4 x 22.1 x 11.0 mm typical.
- SC or AT Cut Crystal.

**TYPICAL APPLICATION**

- SDH/SONET , Telecommunication base station
- Test and measurement equipment
- Synthesizer , Digital switch , Reference Timing Circuit



**DIMENSION**



**Series OSD**

**25.4 x 22.1 mm Oven Controlled Crystal Oscillator**

**ELECTRICAL SPECIFICATION**

Parameter	Min.	Typ.	Max.	Unit	Test Condition & Noted
<b>Output</b>					
Frequency		10		MHz	Available frequency range is from 5MHz to 40MHz. Standard Frequencies are 10, 12.8, 15.36, 16.384, 19.2, 20 and 25MHz
Waveform		Rectangular			Sine wave output is available. Consult factory for more information
Level		HCOMS			
"1" Level	2.8			V	
"0" Level			0.4		
Load		15		pF	
Duty cycle	45	50	55	%	@+1.4 V
Spurious			-60	dBc	
<b>Frequency Stability</b>					
Ambient	-10		+10	ppm	-0°C to +70°C, referenced to +25°C. Refer to Freq. stability Vs Temp. Range table
Aging	-0.5		+0.5	ppb	Per day, at time of shipment after 30 days
Daily	-5.0		5.0	ppb	
Yearly	-50		50	ppb	
10 years	-0.3		0.3	ppm	
Voltage	-0.5		0.5	ppb	±5% change
Warm-up	-10		10	ppb	In 2 minutes @ +25 °C, referenced to 1 hour
Phase Noise			-120.0	dBc/HZ	@ 10 Hz
			-135.0		@ 100 Hz
			-145.0		@ 1kHz
			-150.0		@ 10 kHz
<b>Electrical Frequency Adjustment</b>					
Range			-0.5	ppm	VCO @ 0 V
	0.5				VCO @ +2.8V
Control	0	1.4	2.8	V	
Slope		Positive			
Input impedance	100			KΩ	

**Series OSD**

**25.4 x 22.1 mm Oven Controlled Crystal Oscillator**

<b>Input Power</b>					
Voltage	3.135	3.3	3.465	V	5.0V Input voltage is available.Consult factory for Control voltage and output level
Current			1000	mA	@ turn on
Steady state			0.8	W	@+25°C
<b>Reference Voltage</b>					
Voltage	2.7	2.8	2.9	V	
Load	9			KΩ	
Temperature Stability	-0.1		+0.1	V	Over temperature range

**Packing: 40 pcs/Box,5 boxes/Carton,200 pcs/Carton**

**FREQ. STABILITY vs TEMP. RANGR**

Tem.(°C)	ppb		
	±5	±10	±20
0 ~+70	0	0	0
'-30 ~+70	Δ	0	0
'-40 ~+85	Δ	0	0

O: Available Δ:Conditional X: Not available